

THE GREATER ORWIGSBURG TOWN SURVEY

Conducted
Fall of 2017

How you are living, working, shopping and enjoying life in Orwigsburg is important to borough officials who make daily decisions and plan for the future of your town.

One of the tools guiding these officials is a master plan for your community, known as the Orwigsburg Borough "Comprehensive Plan." This Plan undergoes a review and revision every 10 years to assure the town's direction and goals remain current with the thoughts, desires, and demands of its residents, business and property owners, and of regional trends for controlled growth, economic prosperity, and valued quality of life.

Many residents and visitors will remember last spring a "Quick Survey" was conducted in focus groups and at local restaurants by use of a drink coaster asking just three simple questions – (1) What makes Orwigsburg great?; (2) What is missing?; and (3) What needs to be improved?

An overwhelming response to this, along with data from the previous town questionnaire of 2004, became the basis of The Greater Orwigsburg Town Sur-

vey distributed to every household in Orwigsburg Borough and beyond in the Fall of 2017.

Again the response was extraordinary as 377 official questionnaires, representing more than 20% of households, were received via paper ballot and by identical online survey. The time, careful thought, and heartfelt critique was evident in nearly every response.

CONGRATULATIONS!

Residents have spoken. Borough officials will use these results to amend the Orwigsburg Borough Comprehensive Plan that guides the future of the town for the next decade and beyond.

Following is a 4-page summary of the survey results. The complete survey response (nearly 70 pages) with all comments submitted is available in electronic format through the Orwigsburg Borough website:

www.Orwigsburg.net

As part of the survey, residents' specific comments were solicited. The Borough received 2,020 comments on 17 different categories. Below is a brief summary of the major categories and each major comment in the category.

INFRASTRUCTURE NEEDS

The majority of comments state the streets, sidewalks and storm drainage areas need to be better maintained for residents to walk safely. Residents also would like to see handicap accessible areas.

"Some sidewalks in the borough are not easy to walk on and are even a little dangerous."

"Very hard to find handicap parking in square."

"Poor sidewalks"

"Storm drains cleaned more often."

"Street condition/maintenance"

"Traffic patterns"

EMERGENCY SERVICES – POLICE

The majority of people state the department is doing a good job but there needs to be 24 hour coverage.

"We need 24 hour service."

"I wish we could have 24 hour police."

"With the addition of full time police, things would get much better."

IN-TOWN BUSINESS SERVICES

The majority of comments state a gas station would be really appreciated in town. The community wants to keep the small-town feel with quaint stores instead of chain restaurants.

"A gas station would be spectacular!"

"Mix of small town feel is good - no need to solicit grand scale stores."

"Local gas station is desperately needed."

"Keep chain restaurants out. Mom and pop stores add to the small town feel."

"Gas station needed by far - every resident has to leave town to buy fuel"

EMERGENCY SERVICES – ORWIGSBURG FIRE POLICE

The majority of the comments mention no complaints and others feel the department can be improved.

"Do a good job, but not enough volunteers."

"More volunteers to reroute during emergencies"

"We feel safe and service has been satisfactory"

THE GREATER ORWIGSBURG TOWN SURVEY INFOGRAPHIC

In order to find out more about who lives in and around Orwigsburg, a survey was conducted in Fall 2017. A total of **377 people responded**, providing us insights into who lives or works in the area, what they like about it and the things they would like to see improved.

WHO RESPONDED?

NUMBER OF RESPONDENTS



AGE RANGE



HOW MANY YEARS HAVE YOU BEEN PART OF THE ORWIGSBURG COMMUNITY?

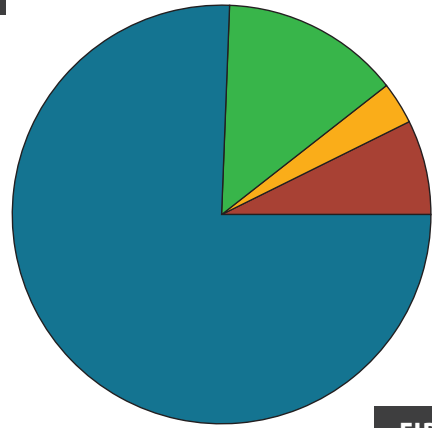


COMMUNITY

"HERITAGE DAY IS THE BEST!"
"TEENS NEED A COFFEE HOUSE WITH VIDEO GAMES."
"WE NEED MORE HANDICAP ACCESSIBLE AREAS FOR PEOPLE ATTENDING EVENTS."

52% OF RESIDENTS

FEEL TEENS NEED MORE RECREATIONAL OPPORTUNITIES IN THE BOROUGH



- BOROUGH RESIDENT - PROPERTY OWNER
- BOROUGH RESIDENT - RENTER
- NON-RESIDENT - PROPERTY OWNER
- AREA RESIDENT - OUTSIDE BOROUGH

11% WORK IN A TECHNICAL JOB
8% WORK IN HEALTHCARE

FIRE DEPARTMENT

75% FAVOR REGIONALIZING VOLUNTEER FIRE POLICE
66% FAVOR REGIONALIZING LOCAL FIRE DEPARTMENTS

"PAID FULL TIME STAFF IS NEEDED."
"...RARELY STAFFED"
"THEY SAVED OUR HOME!"

AMBULANCE SERVICE

83% ARE SATISFIED WITH SCHUYLKILL EMS RESPONSE, SERVICES AND BILLING

"QUICK RESPONSE, VERY IMPRESSIVE!"

81%

CONTRIBUTE TO THE ORWIGSBURG FIRE DEPARTMENT

BUSINESS IN ORWIGSBURG

WHEN ASKED WHAT IN-TOWN BUSINESS SERVICES ARE NEEDED IN ORWIGSBURG, THE TOP 4 RESPONSES WERE: GAS STATION, PLAYHOUSE/MOVIE THEATRE, CONVENIENCE STORE AND FARM MARKET STORE.

70% OF PEOPLE WANT A GAS STATION

"DON'T DEVELOP THE LAND. I WOULD HATE TO SEE THE TOWN BECOME COMMERCIALIZED."

"KEEP THE GREEN SPACE!"

INFRASTRUCTURE NEEDS

"PARKING ON MARKET STREET IS DANGEROUS. DRIVERS SPEED THROUGH TOWN AND DO NOT YIELD TO PEDESTRIANS."

"MANY SIDEWALKS IN THE DOWNTOWN AREA ARE QUITE DIFFICULT TO WALK."

RESPONDENTS ARE MOST PLEASED WITH ORWIGSBURG'S WATER SYSTEM QUALITY, STORM DRAINAGE PERFORMANCE AND PARKING SIGNAGE.

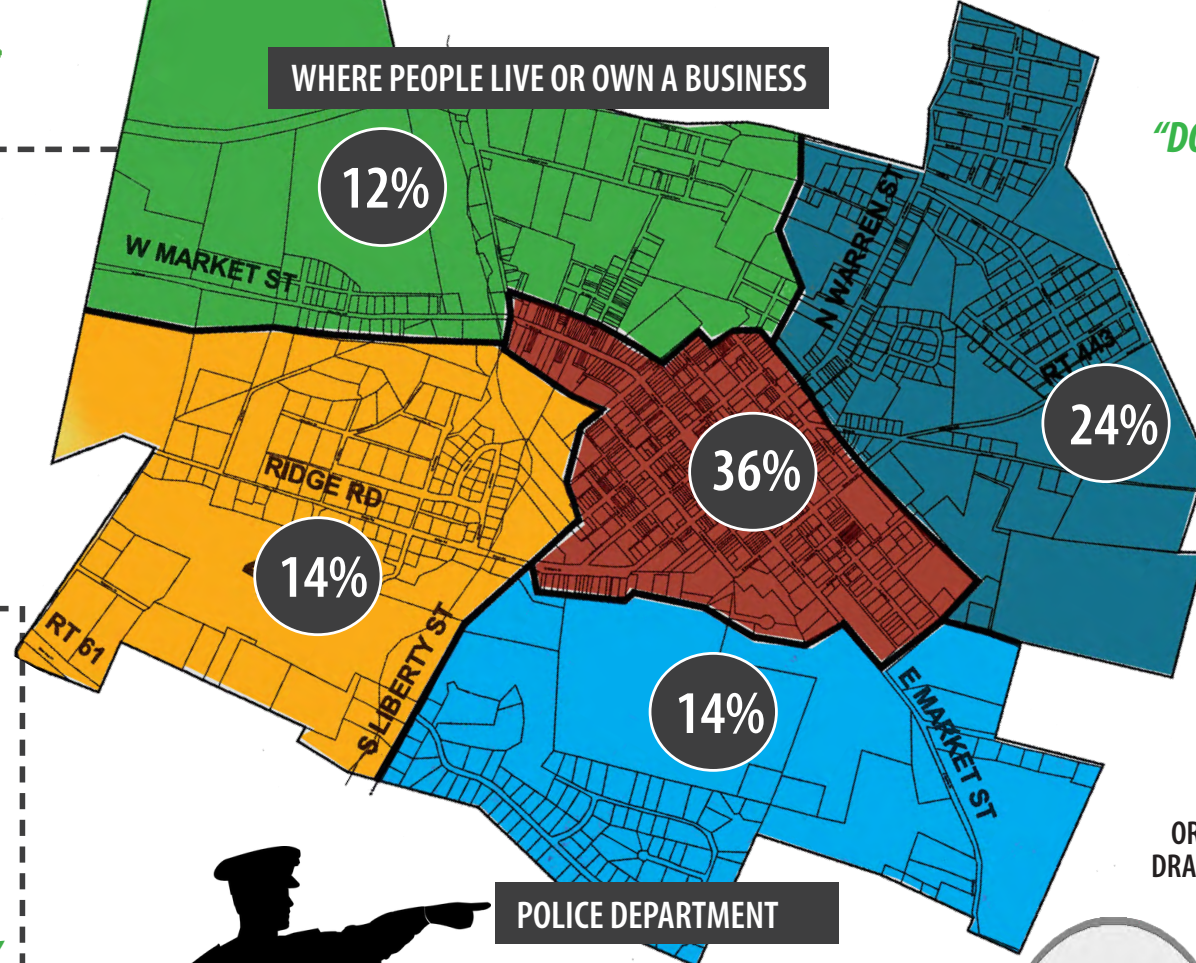
RESPONDENTS FEEL THAT CURBS AND SIDEWALK CONDITIONS NEED TO BE VASTLY IMPROVED.

MUNICIPAL SERVICES

"IT WOULD BE NICE TO HAVE RECYCLING ONCE A WEEK."

TRASH COLLECTION EXCEEDS MOST RESIDENTS EXPECTATIONS. PUBLIC RESTROOMS AND TRANSPORTATION ARE AREAS THAT NEED IMPROVEMENT.

WHERE PEOPLE LIVE OR OWN A BUSINESS



POLICE DEPARTMENT

66% FEEL THAT BOROUGH COUNCIL SHOULD ASSURE 24/7 POLICE PROTECTION THROUGH A TAX INCREASE

55% FAVOR REGIONALIZING LOCAL POLICE DEPARTMENTS

"WE NEED TO KEEP AN OFFICER AT THE POLICE STATION 24/7."
"MORE DRUG ENFORCEMENT NEEDED!"
"POLICE NEED TO BE PATROLLING MORE OFTEN."

89%

WANT MORE PARK AREA FOR PUBLIC USE
 41% ADD TO EXISTING
 28% CREATE A NEW CENTRAL PARK
 31% NEIGHBORHOOD "POCKET PARKS"

78%

CONTRIBUTE TO THE SCHUYLKILL EMS AMBULANCE

74%

CONTRIBUTE TO THE ORWIGSBURG FREE PUBLIC LIBRARY



THE GREATER ORWIGSBURG TOWN SURVEY

COMMENTS / RESPONSES



RECREATIONAL NEEDS

The majority of comments were split between people wanting a dog park and not wanting a dog park. Residents would like to see a community center. Comments also mention current playgrounds can use handicap equipment and restrooms.

- "No dog park, can't clean up after pets now - who will clean dog park."
- "A dog park may bring more visitors to town. I don't think there is one closer than 30 minutes away."
- "Need to have accessible restroom facilities for these fields."
- "walking / biking trails throughout town and outside of town"

TRAITS OF THE ORWIGSBURG COMMUNITY THAT ARE MOST IMPORTANT

